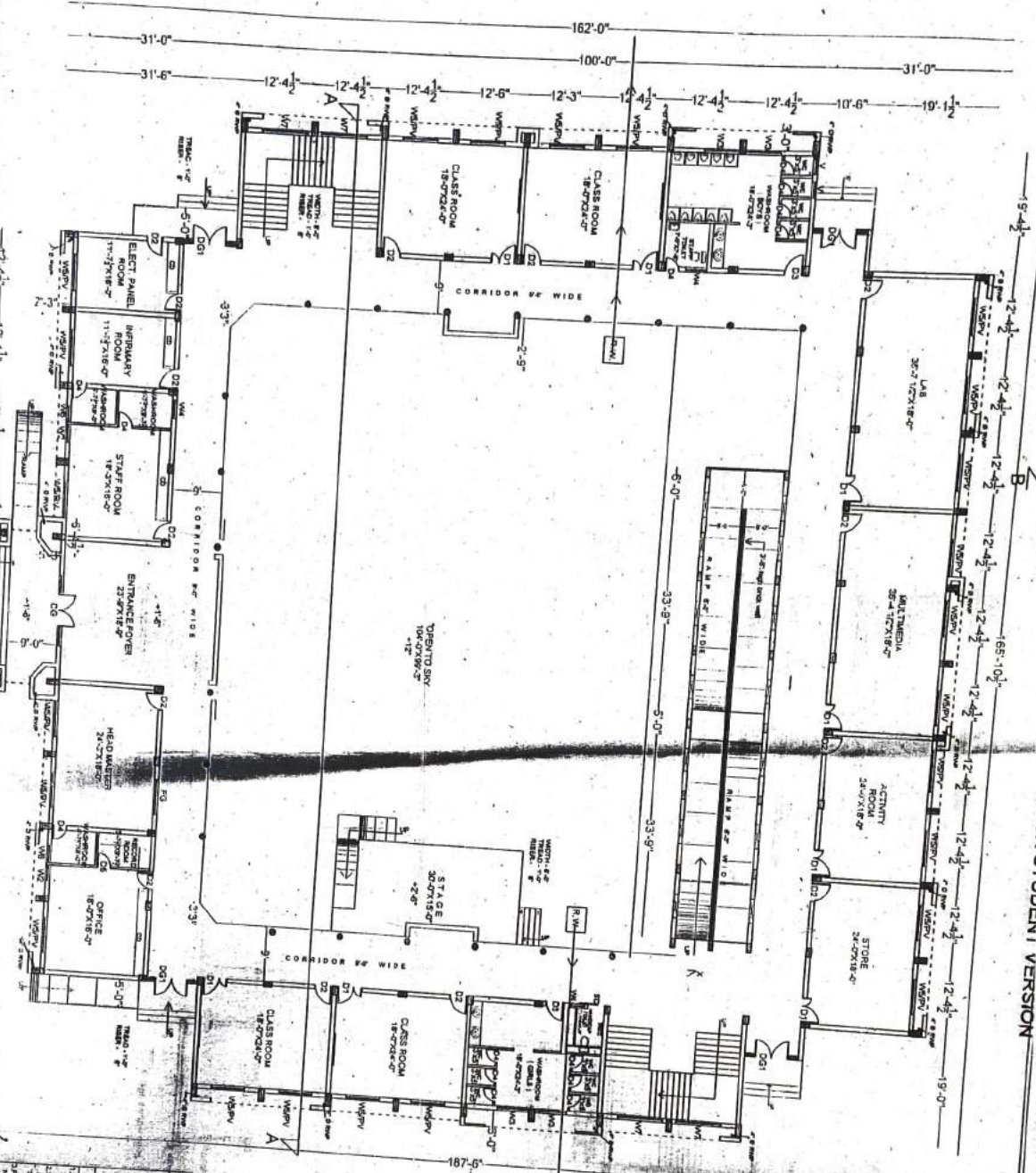


GROUND FLOOR PLAN  
 COVD AREA ON GF = 15102 SFT.  
 COVD AREA ON FF = 14282 SFT.  
 COVD AREA ON ALL FLOOR = 15102 + 14282 + 500 = 44166 SFT.



PRODUCED BY AN AUTODESK STUDENT VERSION

THE 2ND FLOOR PLAN HAD BEEN PREPARED ON THE BASIS OF SCOPE OF WORK SUPPLIED BY THE SEE (FBD) VIDEO OFFICE LETTER NO 2659 DATED 25.07.2018

THE ELEMENTARY SCHOOL HAS BEEN UPGRADED TO HIGHER SECONDARY SCHOOL BY DGP HARYANA VIDEO OFFICE LETTER NO 2350WQ DATED 15.02.2019

REVISION:  
 THIS DRAWING HAS BEEN APPROVED AS PER DECISION TAKEN BY DGP HARYANA VIDEO OFFICE LETTER NO 2350WQ DATED 15.02.2019

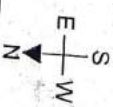
GENERAL NOTES:  
 1. DIMENSIONS & CONSTRUCTION REQUIREMENTS SHALL BE AS PER DRAWINGS.  
 2. DIMENSIONS SHALL BE AS PER DRAWINGS.  
 3. DIMENSIONS SHALL BE AS PER DRAWINGS.  
 4. DIMENSIONS SHALL BE AS PER DRAWINGS.  
 5. DIMENSIONS SHALL BE AS PER DRAWINGS.



HARYANA POLICE HOUSING CORPORATION  
 PANCHKULA  
 STANDARD PLAN FOR ELEMENTARY SCHOOL  
 POLICE LINES IN SIRSA  
 FATEHABAD PALWAL  
 JHAJJAR YAMJANAGAR

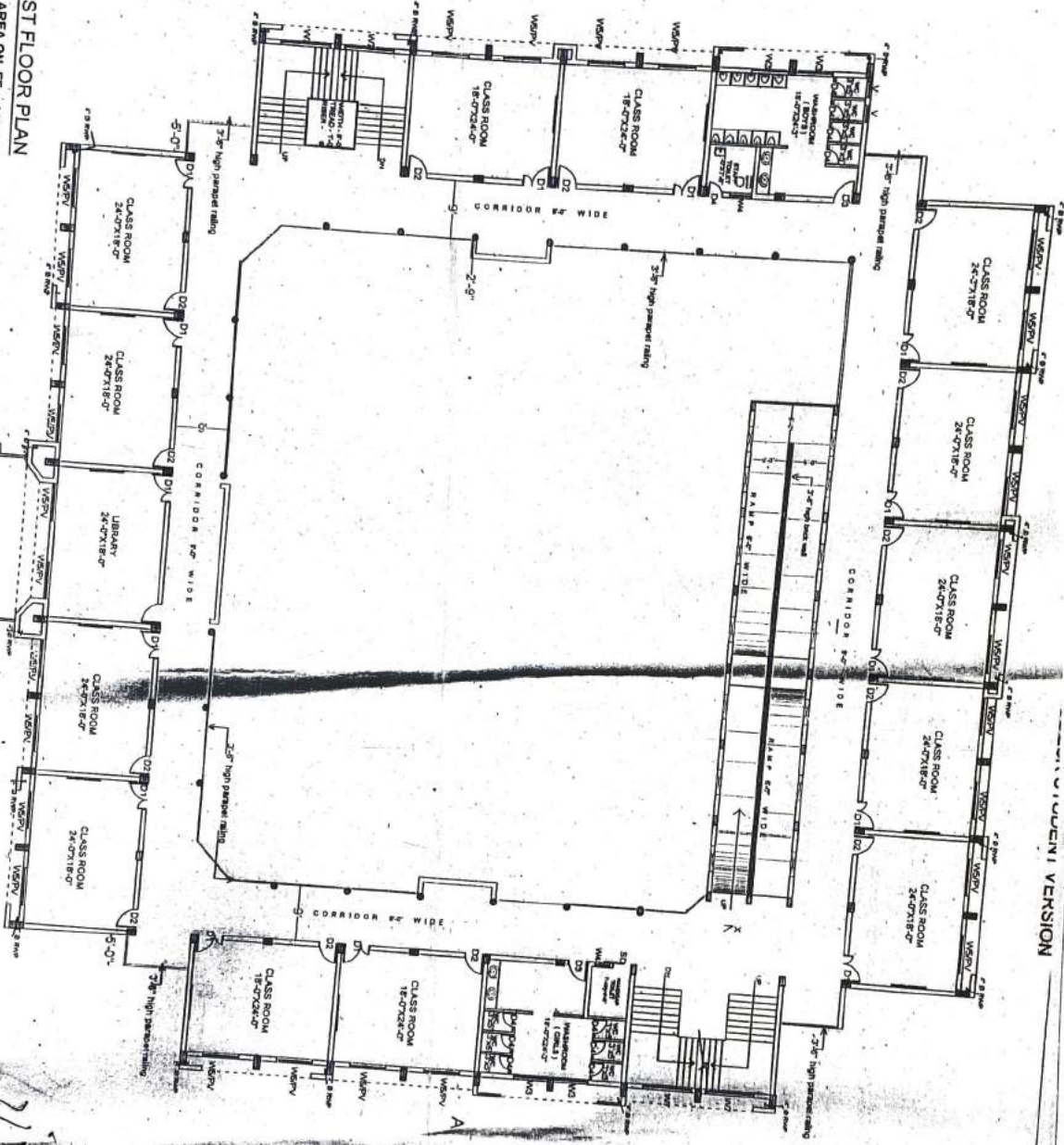
SNO	NAME	SIZE	CILL TOP
1	DG	12'-0" X 8'-0"	8'-5"
2	DG1	8'-3" X 8'-0"	8'-5"
3	D1	4'-6" X 8'-0"	8'-5"
4	D2	3'-6" X 8'-0"	8'-5"
5	D3	3'-0" X 7'-0"	7'-0"
6	D4	2'-6" X 7'-0"	7'-0"
7	D5	3'-3" X 6'-0"	8'-0"
8	W2	3'-0" X 6'-0"	2'-9"
9	W3	6'-0" X 2'-0"	5'-0"
10	W4	3'-0" X 2'-0"	5'-0"
11	W5	6'-0" X 4'-0"	2'-9"
12	W6	3'-0" X 3'-0"	8'-0"
13	W7	6'-0" X 3'-0"	3'-6"
14	W8	6'-0" X 4'-0"	3'-0"
15	SD	3'-0" X 7'-0"	7'-0"
16	V	2'-6" X 1'-0"	8'-0"
17	PV	6'-0" X 2'-0"	7'-9"

THIS DRAWING HAS BEEN APPROVED BY WICM ON BEHALF OF DATED 16.03.2017



TITLE	9/8/2018
ARCHITECT	SA
JOB NO.	1078
DRG. NO.	1
DATE	26/6/2018
TITLE	9/8/2018

**FIRST FLOOR PLAN**  
 COVD AREA ON FF = 14282 SFT.



PRODUCED BY AN AUTODESK STUDENT VERSION

PRODUCED BY AN AUTODESK STUDENT VERSION

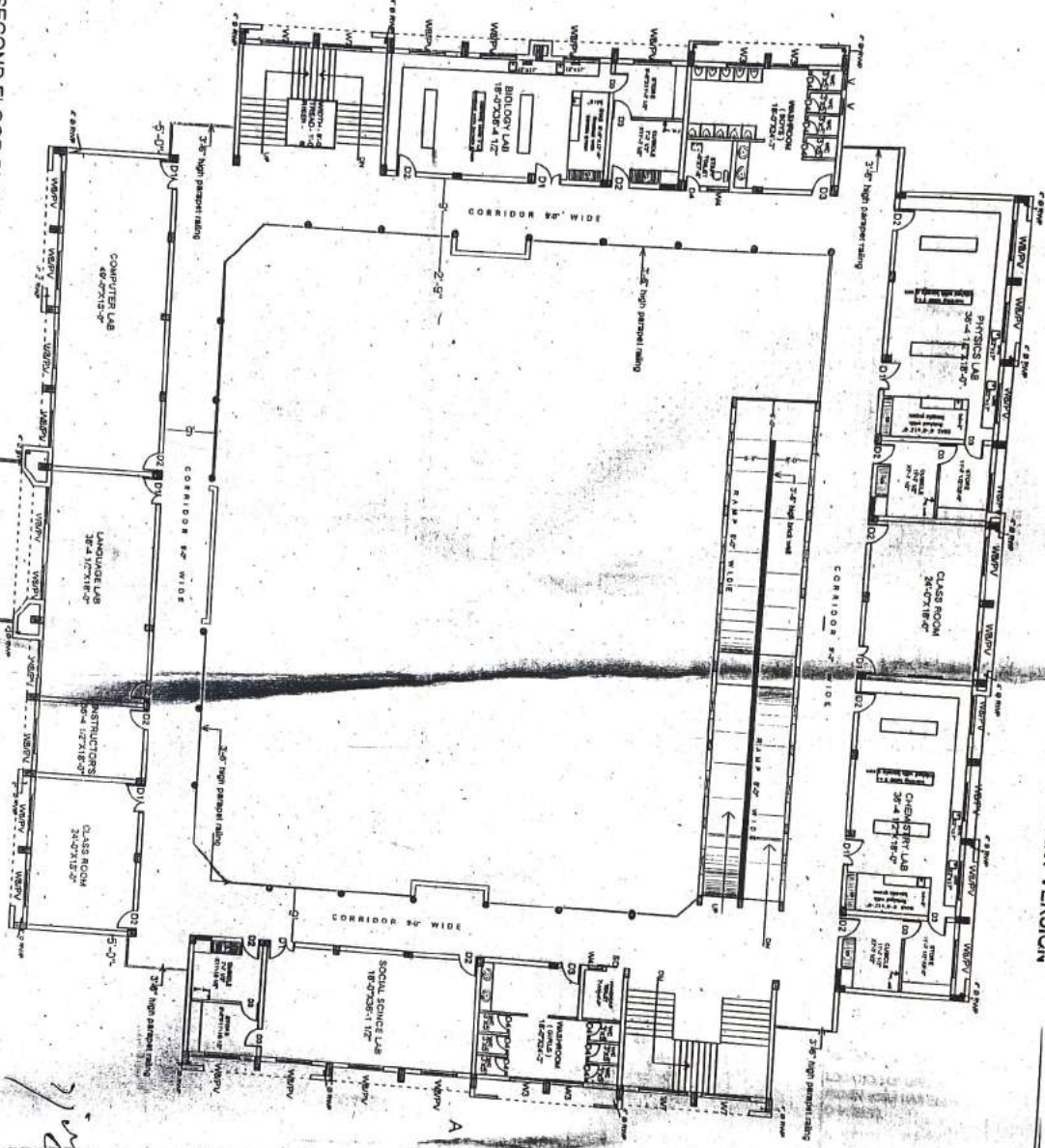
*Handwritten signature/initials*

TITLE	STANDARD PLAN FOR ELEMENTARY SCHOOL POLICE LINES IN SIRSA, FATEHABAD PALWAL, JHALLAR YAMUNNAGAR		
DRG. NO.	2	DATE	25/6/2018
ARCHITECT	SA	SCALE	
JOB NO.	1076		
CE	CA		
CM.D			



HARYANA POLICE HOUSING CORPORATION  
 PANCHKULA  
 STANDARD PLAN FOR ELEMENTARY SCHOOL POLICE LINES IN SIRSA, FATEHABAD PALWAL, JHALLAR YAMUNNAGAR

SECOND FLOOR PLAN  
 COVD AREA ON SF = 14232 SFT.



PRODUCED BY AN AUTODESK STUDENT VERSION

TITLE	SECOND FLOOR PLAN
ARCHITECT	SA
JOB NO.	1076
DRG. NO.	2
DATE	9/8/2018
C.M.D.	
C.E.	CA

Sub D. National Engineer  
 Hyderabad



**HARYANA POLICE HOUSING CORPORATION**  
 HOUSING CORPORATION  
 PANCHKULA

STANDARD PLAN FOR  
 HIGH SECONDARY SCHOOL  
 IN POLICE LINES SIRSA,  
 FATEHABAD, PALWAL,  
 JHAJJAR & YAMUNANAGAR